

Enterprise Communication Systems
Product Information Forum #1

Dialog 4000 telephone family

Digital, Analogue and IP Phones



Presentation Outline

Dialog 4000 telephone family

What are the characteristics of Dialog 4000?

- Design, engineering & environmental milestones

What are the D4 family members?

- Digital, Analogue, IP terminals and accessory options

What is the rollout plan?

- Release steps of D4 terminals and accessories

A new design language

■ State of the art industrial design

- distinctive Ericsson identity
- sleek concave body
- bulging loudspeaker grid visualises high performance loudspeaker function
- unique “landing gear” feet
- exclusive metallic cover parts
- ergonomic bow-shaped keypanels

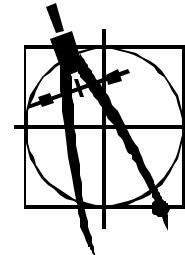


Advanced engineering



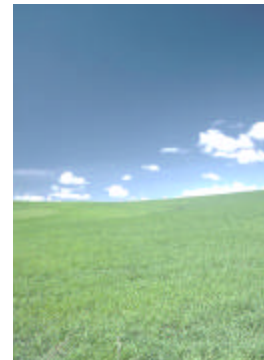
■ Latest technology

- highly integrated circuit board design
- optimised PCB sizes
- advanced mechanical solutions
- Full duplex handsfree (automatic echo cancellation) on top-model
- Flash memory (e.g. firmware download)
- high-contrast graphical displays
- easier installation



■ Environmental friendly design

- industry leading environmental efforts
- no hazardous materials & components
- reduced power consumption
- environmental friendly packaging
- PVC free handset cord
- no flame-retardant plastics



Dialog 4200 Digital Telephone Sets



- Complete portfolio of 5 different telephone sets
 - Basic
 - Office
 - Feature
 - Advance
 - Operator
- Integrated headset connector / function
 - no external switchboxes required
- Full graphical displays support different fonts and character sets
- Firmware download facility
 - upgrade telephones installed at the customer side (e.g. faults, new functions)



Dialog 4220

■ Basic model

- attractive terminal for basic users
- 10 programmable keys
- integrated headset function
- loudspeaking
- Option Unit compatible



Dialog 4222



■ Office model

- well equipped standard phone
- graphical display
- handsfree
- integrated headset function / connector
- Option Unit compatible
- Up to 1 extra keypanel



Dialog 4223

■ Feature model

- efficiency instrument
- full graphical display
- handsfree
- integrated headset function / connector
- Option Unit compatible
- Up to 4 extra keypanels



Dialog 4225 June 2003



■ Advance model

- top of the line
- Operator version DBC224
- large full graphical display
- handsfree with full-duplex
- integrated headset connector
- Option Unit compatible
- extra navigation keys
- up to 4 extra keypanels



D4 operation modes



- D3 backwards compatible mode
 - full backwards compatibility for existing installations
 - phones behave like corresponding D3 model
- D4 mode
 - support of graphical displays for improved user interface
 - services visible
 - plain language
 - navigation key support
 - enhanced functionality

Dialog 4100 Analogue Telephone Sets June 2003



- Portfolio of 3 different telephone sets
 - Basic
 - Medium/Hotel
 - High
- Complement our D4 DTS portfolio
- Message Waiting LED's



Dialog 4106 Basic



Dialog 4147 Medium/Hotel



Dialog 4186 High

Dialog 4400 IP Telephone / June 2003



- Based on D4 DTS top model mechanics
- Advanced features
- Built-in switch
- WAP browser
- Built-in webserver for easy maintenance via browser
- Flexible platform



Dialog 4425, Feature IP

Impressions of a new era

